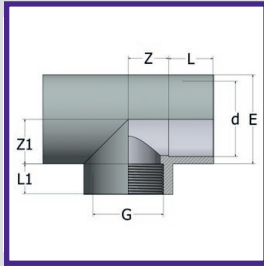


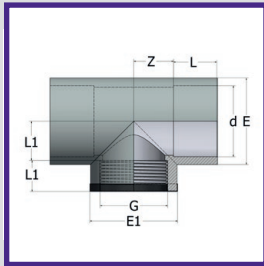
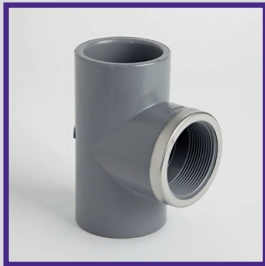
ABS PRESSURE FITTINGS PLAIN / THREADED (BSP)

EQUAL TEE



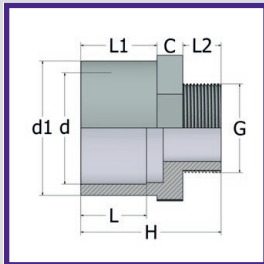
d x G	PART NO	L	L1	Z	Z1	E	Wt (g)	Box
1/2"	011.062.02	16	15	11	12	27.5	19	220
3/4"	011.062.03	19	16.3	14	16	33.5	29	280
1"	011.062.04	22	19.1	17	19.7	42	52	150
1 1/4"	011.062.05	26	21.4	23	19.9	51	80	80
1 1/2"	011.062.06	31	21.4	28	27.6	61	160	90
2"	011.062.07	38	25.7	34	37.6	75	286	50
2 1/2"	011.062.08	44	30.2	40	46.3	89	380	32
3"	011.062.09	51	33.3	48	53.8	106	663	20
4"	011.062.10	61	39.3	58	65.7	132	1094	9

EQUAL TEE – S/S REINFORCED



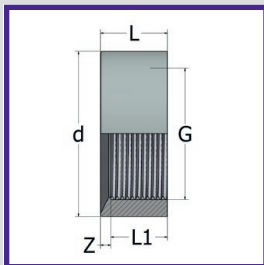
d x G	PART NO	L	L1	Z	Z1	E	E1	Wt (g)	Box
1/2"	011.362.02	16	15	11	12	27.5	28.5	19	220
3/4"	011.362.03	19	16.3	14	16.7	33.5	34.5	32	250
1"	011.362.04	22	19.1	17	19.9	42	43	55	140
1 1/4"	011.362.05	26	21.4	21	25.6	51	52	89	80
1 1/2"	011.362.06	31	21.4	26	35.6	61	62	190	90
2"	011.362.07	38	25.7	33	45.3	75	76	300	50

ADAPTOR – FEMALE PLAIN / MALE PLAIN / MALE THREADED



d x d1 x G	PART NO	L	L1	L2	H	C	Wt (g)	Box
1/2" x 3/4" x 1/2"	011.202.02	16	19	15	46	27	11	400
1/2" x 3/4" x 3/4"	011.202.0203	16	19	16.3	47	30	12	350
3/4" x 1" x 3/4"	011.202.03	19	22	16.3	50	36	20	450
3/4" x 1" x 1"	011.202.0304	19	22	19.1	53	36	22	400
1" x 1 1/4" x 1"	011.202.04	22	26	19.1	57	42	32	270
1" x 1 1/4" x 1 1/4"	011.202.0405	22	26	21.4	60	46	39	200
1 1/4" x 1 1/2" x 1 1/4"	011.202.05	26	31	21.4	66.5	55	46	150
1 1/4" x 1 1/2" x 1 1/2"	011.202.0506	26	31	21.4	66.5	55	48	140
1 1/2" x 2" x 1 1/2"	011.202.06	31	38	21.4	74	65	83	120
1 1/2" x 2" x 2"	011.202.0607	31	38	25.7	78	65	93	170
2" x 2 1/2" x 2"	011.202.07	38	44	25.7	84	75	114	90
2" x 2 1/2" x 2 1/2"	011.202.0708	38	44	30.2	91	80	135	90
2 1/2" x 3" x 2 1/2"	011.202.08	44	51	30.2	99	95	195	45
2 1/2" x 3" x 3"	011.202.0809	44	51	33.3	102	95	206	60
3" x 4" x 3"	011.202.09	53	61	33.3	113	119	434	45
3" x 4" x 4"	011.202.0910	51	61	39.3	118	115	438	36
4" x 5" x 4"	011.202.10	61	69	39.3	120	130	320	30
4" x 5" x 5"	011.202.1011	61	64	43.6	124	140	420	30

REDUCING BUSH



d x G	PART NO	L	L1	Z	Wt (g)	Box
3/8" x 1/4"•	011.092.0100	14	12	2	2	100
1/2" x 1/4"•	011.092.0200	16	14	2	4	100
1/2" x 3/8"•	011.092.0201	16	13.5	2.5	2	100
3/4" x 1/2"	011.092.0302	19	15	4	6	1000
1" x 3/4"	011.092.0403	22	16.3	5.7	9	400
1 1/4" x 1"	011.092.0504	26	19.1	6.9	16	250
1 1/2" x 1 1/4"	011.092.0605	31	21.4	9.6	21	350
2" x 1 1/2"	011.092.0706	38	21.4	16.6	45	180
2 1/2" x 2"	011.092.0807	44	25.7	18.3	83	110
3" x 2 1/2"	011.092.0908	51	30.2	20.8	109	65
4" x 3"	011.092.1009	61	33.3	27.7	274	36

• NON COMER PRODUCT

UK Wide Next Day Delivery*

epco customers can place orders up to 5pm for next day delivery to most addresses in the UK*

ABS

PVC IMPERIAL

PVC METRIC

POLYPROPYLENE

COMPRESSION FITTINGS

GUIDELINES

