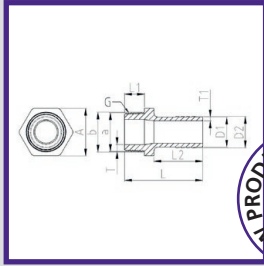


ABS PRESSURE FITTINGS PLAIN / THREADED (BSP)

CHALLENGER HOSE ADAPTOR – MALE BSP x INCH HOSE TAIL

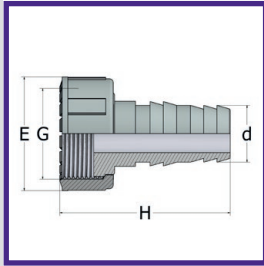


D2 x b	PART NO	L	A	L1	L2	D1	D2	Wt (g)	Box
1/2" x 1/2"	011.262M.0202	60	25.5	13.2	40	12.7	13.8	13	1000
3/4" x 3/4"	011.262M.0303	64	35	16	40	18.5	20	21	1000
1" x 1"	011.262M.0404	68	40	19	41	25	26.6	20	500

RANGE OF PP HOSE FITTINGS AVAILABLE SEE PAGE 175

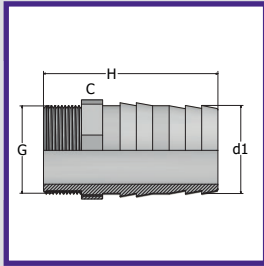


HOSE ADAPTOR – FEMALE BSP x mm HOSE TAIL



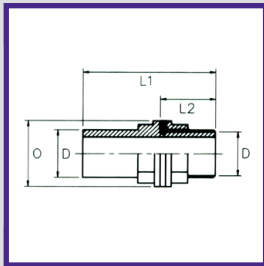
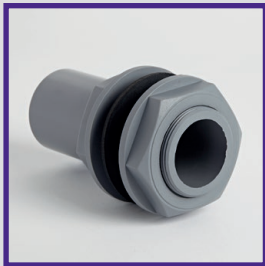
G x d	PART NO	H	E	Wt (g)	Box
3/4" x 16	011.872.03016	54	34	22	150
1" x 20	011.872.04020	59	42	31	120
1 1/4" x 25	011.872.05025	63	52	47	160
1 1/2" x 30	011.872.06030	68	59	66	120
2" x 40	011.872.07040	77	72	105	60
2 1/4" x 50	011.872.08050	80	79	140	45
2 3/4" x 60	011.872.08060	84	96	215	30

HOSE ADAPTOR – MALE BSP x mm HOSE TAIL



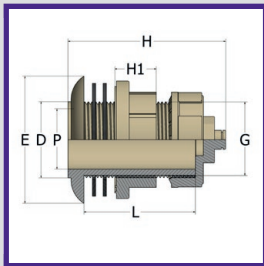
G x d1	PART NO	L	H	C	Wt (g)	Box
1/4" x 12	011.262M.00012	11	52	19	8	700
3/8" x 16	011.262M.01016	11.4	64	19	15	500
1/2" x 20	011.262M.02020	15	70	24	20	700
3/4" x 25	011.262M.03025	16.3	76	30	30	430
1" x 32	011.262M.04032	19.1	80	36	50	250
1 1/4" x 40	011.262M.05040	21.4	92	46	70	300
1 1/2" x 50	011.262M.06050	21.4	99	55	118	200
2" x 60	011.262M.07060	25.7	118	65	190	115

TANK CONNECTOR



D	PART NO	L1	L2	O	Wt (g)	Box
1/2"	011.242.02	77	42	38	31	50
3/4"	011.242.03	77	42	42	37	50
1"	011.242.04	103	55	55	71	25
1 1/4"	011.242.05	121	65	65	112	25
1 1/2"	011.242.06	128	73	72	168	10
2"	011.242.07	154	85	93	317	10
2 1/2"	011.242.08	164	88	106	358	10
3"	011.242.09	202	112	125	674	10
4"	011.242.10	230	130	154	1214	10
6"	011.242.12	280	155	235	4200	1

PP TANK CONNECTOR



D	PART NO	D	E	H	P	L	H1	Wt (g)
1 1/2"	031.242.06	48	80	90	37	56	25	125

• NON COMER PRODUCT

UK Wide Next Day Delivery*

epco customers can place orders up to 5pm for next day delivery to **most** addresses in the UK*

ABS

PVC IMPERIAL

PVC METRIC

POLYPROPYLENE

COMPRESSION FITTINGS

GUIDELINES

