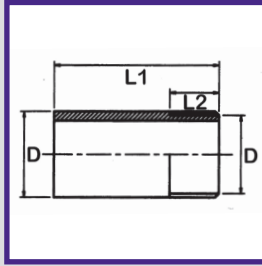


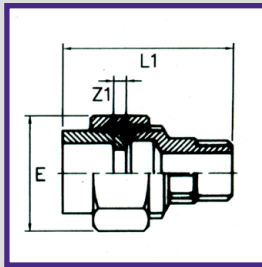
ABS PRESSURE FITTINGS PLAIN / THREADED (BSP)

NIPPLE



D	PART NO	L2	L1	Wt (g)	Box
3/8"	011.252.01	13	42	8	100
1/2"	011.252.02	17	50	14	100
3/4"	011.252.03	19	56	25	100
1"	011.252.04	20	63	38	50
1 1/4"	011.252.05	24	75	52	25
1 1/2"	011.252.06	30	88	80	10
2"	011.252.07	32	88	115	10
2 1/2"	011.252.08	33	106	197	10
3"	011.252.09	39	128	300	10
4"	011.252.10	40	153	560	10

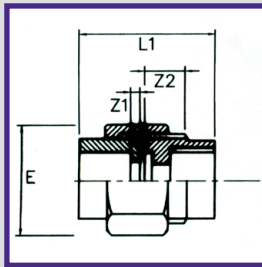
COMPOSITE UNION – MALE BRASS



SIZE	PART NO	E	L1	Z1	Wt (g)
1/2"	011.762.02	44	56	3	175
3/4"	011.762.03	46	64	3	210
1"	011.762.04	55	68	9	318
1 1/4"	011.762.05	65	84	10	435
1 1/2"	011.762.06	72	86	12	516
2"	011.762.07	88	95	14	768
2 1/2"	011.762.08	108	114	18	1400
3"	011.762.09	122	130	18	1860

PLEASE NOTE: FOR CONNECTING PLASTIC PIPEWORK SYSTEMS TO METAL PIPEWORK SYSTEMS COMPOSITE UNIONS AND/OR FLANGES MUST BE USED

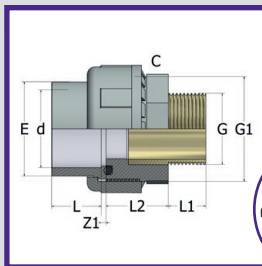
COMPOSITE UNION – FEMALE BRASS



SIZE	PART NO	E	L1	Z1	Z2	Wt (g)
1/2"	011.752.02	44	43	3	9	175
3/4"	011.752.03	46	48	3	10	186
1"	011.752.04	55	54	9	11	290
1 1/4"	011.752.05	65	63	10	11	365
1 1/2"	011.752.06	72	65	12	12	465
2"	011.752.07	88	78	14	14	680
2 1/2"	011.752.08	108	87	14	18	1220
3"	011.752.09	122	105	16	18	1610

PLEASE NOTE: FOR CONNECTING PLASTIC PIPEWORK SYSTEMS TO METAL PIPEWORK SYSTEMS COMPOSITE UNIONS AND/OR FLANGES MUST BE USED

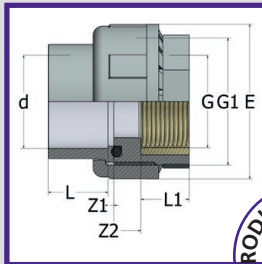
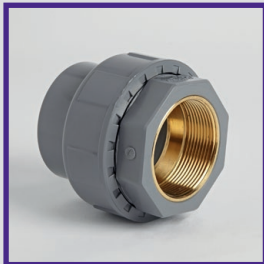
COMPOSITE UNION – MALE BRASS WITH ABS NUT



d x G	PART NO	L	L1	L2	Z1	C	G1	E	O-R	Wt (g)	Box
1 1/2"	011.762.06	31	21,4	40	3	65	2 1/4"	79	6187	341	30
2"	011.762.07	38	25,7	42	3	70	2 3/4"	96	6237	535	12



COMPOSITE UNION – FEMALE BRASS WITH ABS NUT



d x G	PART NO	L	L1	L2	Z1	C	G1	E	O-R	Wt (g)	Box
1 1/2"	011.752.06	31	21,4	40	3	55,4	2 1/4"	79	6187	250	30
2"	011.752.07	38	25,7	42	3	66,7	2 3/4"	96	6237	374	12



• NON COMER PRODUCT

