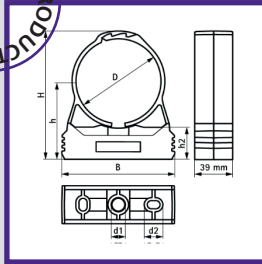
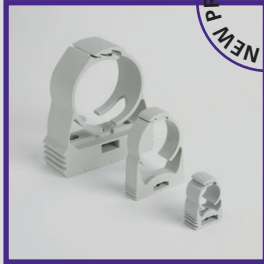
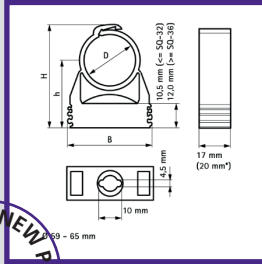
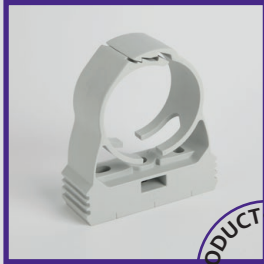


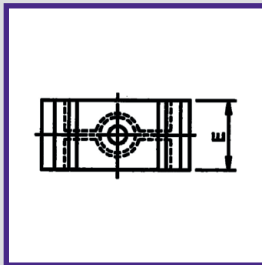
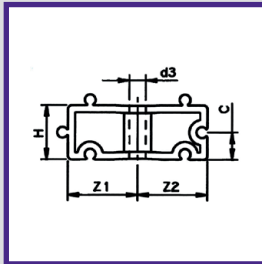
QUICK CLAMP PIPE CLIP



D	PART NO	o.d.	DN	B (mm)	H (mm)	h (mm)
3/8"	961.47.01	16-20	10	29	40	26
1/2"	961.47.02	20-23	15	29	44	27
3/4"	961.47.03	24-28	20	40	50	31
1"	961.47.04	32-35	25	43	57	34
1 1/4"	961.47.05	40-44	32	52	70	42
1 1/2"	961.47.06	48-55	40	63	81	47
2"	961.47.07	59-65	50	74	94	55

D	PART NO	o.d.	d1 (mm)	d2 (mm)	h2 (mm)
2 1/2"	961.47.08	71-76	10.5	13 x 8.3	28
3"	961.47.09	88-93	13.0	13 x 8.3	32
4"	961.47.10	109-115	13.0	15 x 10.5	35

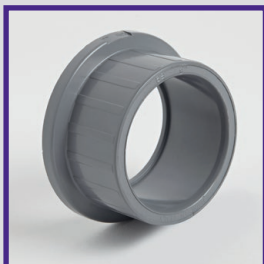
INDUSTRIAL SPACING BLOCK – BLACK P/P



SIZE	PART NO	d3	Z1	Z2	H	C	E	Wt (g)	Box
3/8"	961.42.01	5.5	14	16.5	20	10	16	4.5	400
1/2"	961.42.02	5.5	16.5	19	20	10	16	5	400
3/4"	961.42.03	5.5	19	21.5	20	10	16	6	800
1"	961.42.04	5.5	24	26.5	20	10	16	8	600
1 1/4"	961.42.05	6.5	33.5	33.5	20	10	22	16	250
1 1/2"	961.42.06	6.5	37	37	20	10	22	17	250
2"	961.42.07	8.5	44.5	44.5	20	10	25	24	150
2 1/2"	961.42.08	8.5	52	52	20	10	25	28	80
3"	961.42.09	8.5	64.5	64.5	20	10	28	42	100
4"	961.42.10	8.5	78	78	20	10	28	49	80

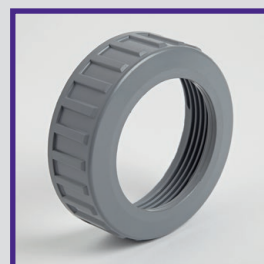
THIS PRODUCT IS DESIGNED FOR USE WITH OUR INDUSTRIAL PIPE CLIP PAGE 43 PRODUCT COSE 961.41

ABS VALVE END PLAIN



SIZE	PART NO
3/8"	VEIPABS001
1/2"	VEIPABS002
3/4"	VEIPABS003
1"	VEIPABS004
1 1/4"	VEIPABS005
1 1/2"	VEIPABS006
2"	VEIPABS007
2 1/2"	VEIPABS008
3"	VEIPABS009
4"	VEIPABS010

ABS VALVE NUT



SIZE	PART NO
3/8" - 1/2"	VNABS020
3/4"	VNABS025
1"	VNABS032
1 1/4"	VNABS040
1 1/2"	VNABS050
2"	VNABS063
2 1/2"	VNABS075
3"	VNABS090
4"	VNABS110

