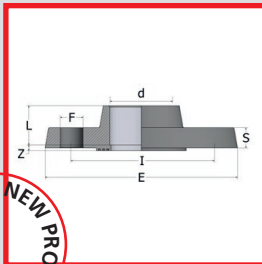
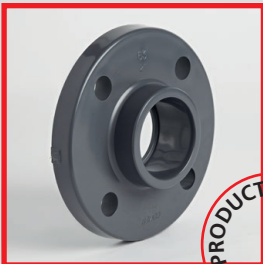


PVC SINGLE CLAMP SADDLE – INCH SIZES



d	PART NO	d	PART NO
3" x 1/2"	021.2061.0902	6" x 1 1/4"	021.2061.1205
3" x 3/4"	021.2061.0903	6" x 1 1/2"	021.2061.1206
3" x 1"	021.2061.0904	6" x 2"	021.2061.1207
3" x 1 1/4"	021.2061.0905	6" x 3"	021.2061.1209
3" x 1 1/2"	021.2061.0906	6" x 4"	021.2061.1210
3" x 2"	021.2061.0907	8" x 1/2"	021.2061.1302
4" x 1/2"	021.2061.1002	8" x 3/4"	021.2061.1303
4" x 3/4"	021.2061.1003	8" x 1"	021.2061.1304
4" x 1"	021.2061.1004	8" x 1 1/4"	021.2061.1305
4" x 1 1/4"	021.2061.1005	8" x 1 1/2"	021.2061.1306
4" x 1 1/2"	021.2061.1006	8" x 2"	021.2061.1307
4" x 2"	021.2061.1007	8" x 3"	021.2061.1309
4" x 3"	021.2061.1009	8" x 4"	021.2061.1310
6" x 1/2"	021.2061.1202	8" x 6"	021.2061.1312
6" x 3/4"	021.2061.1203	10" x 4"	021.2061.1410
6" x 1"	021.2061.1204	10" x 6"	021.2061.1412

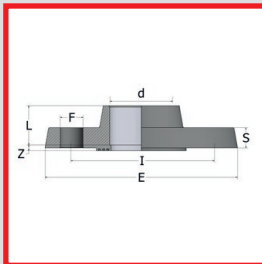
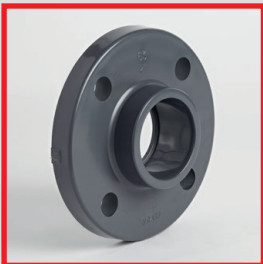
UNIVERSAL DRILLED FULL FACE FLANGE



d	PART NO	L	Z	I	S	E	HOLES	Bolt Dia	Wt (g)	Box
2"	021.141.07-UNIV	38	4.5	125	18	165	4	M16	380	36
2 1/2"	021.141.08-UNIV	44	6	145	19	185	4	M16	505	15
3"	021.141.09-UNIV	51	7	160	20	200	8	M16	685	30
4"	021.141.10-UNIV	61	8	180	22	220	8	M16	940	24
6"	021.141.12-UNIV	92	8	235	22	285	8	M20	1218	6

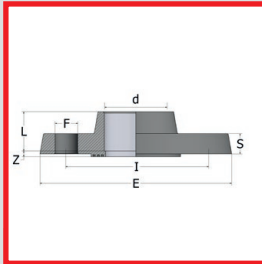
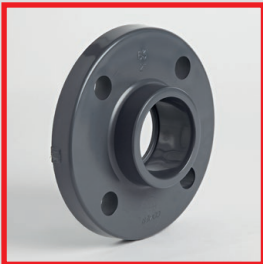
SUITABLE FOR TABLE D/E, NP10/16 & ASA150 (EXCEPT 4" WHICH IS NOT COMPATIBLE WITH ASA150).
WHILST SUITABLE FOR TABLE D/E & ASA150, 3" HAS 8 HOLES, SAME APPLIES FOR 4" TABLE D.

FULL FACE FLANGE – NP10/16



d	PART NO	L	Z	I	S	E	HOLES	Bolt Dia	Wt (g)	Box
1/2"	021.141.02Z	16	4.5	65	11	95	4	M12	78	100
3/4"	021.141.03Z	19	4.5	75	12	105	4	M12	105	60
1"	021.141.04Z	22	4.5	85	14	115	4	M12	143	50
1 1/4"	021.141.05Z	26	4.5	100	15	142	4	M16	220	50
1 1/2"	021.141.06Z	31	4.5	110	16	152	4	M16	280	48
2"	021.141.07Z	38	4.5	125	18	165	4	M16	380	36
2 1/2"	021.141.08Z	44	6	145	19	185	4	M16	505	15
3"	021.141.09Z	51	7	160	20	200	8	M16	685	30
4"	021.141.10Z	61	8	180	22	220	8	M16	940	24

FULL FACE FLANGE – BS10 TABLES D & E



d	PART NO	L	Z	I	S	E	HOLES	Bolt Dia	Wt (g)	Box
1/2"	021.141.02W	16	4.5	67	11	95	4	M12	78	100
3/4"	021.141.03W	19	4.5	73	12	105	4	M12	105	60
1"	021.141.04W	22	4.5	83	14	115	4	M12	143	50
1 1/4"	021.141.05W	26	4.5	88	15	142	4	M12	220	50
1 1/2"	021.141.06W	31	4.5	98	16	152	4	M12	280	48
2"	021.141.07W	38	4.5	115	18	165	4	M16	380	36
2 1/2"	021.141.08W	44	6	127	19	185	4	M16	505	15
3"	021.141.09W	51	7	146	20	200	4	M16	685	30
4" E	021.141.10W	61	8	178	22	220	8	M16	940	24

• NON COMER PRODUCT

