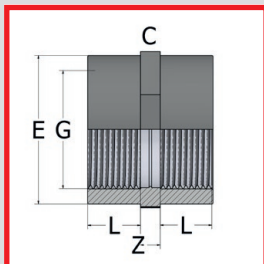
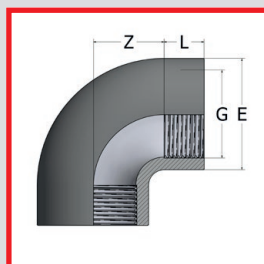


SOCKET



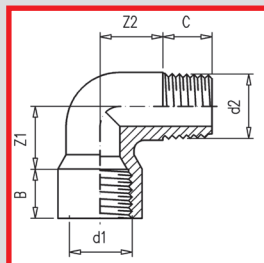
G	PART NO	L	Z	E	C	Wt (g)	Box
3/8"	021.013.01	11.4	6	23.5	24	8	600
1/2"	021.013.02	15	7	28	30	20	350
3/4"	021.013.03	16.3	7	34	36	25	500
1"	021.013.04	19.1	8	42	46	45	300
1 1/4"	021.013.05	21.4	8	50.5	55	65	180
1 1/2"	021.013.06	21.4	8	57.5	60	70	160
2"	021.013.07	25.7	8	71.5	75	125	85
2 1/2"	021.013.08	30.2	9	88	90	200	48
3"	021.013.09	33.3	10	102	105	276	60
4"	021.013.10	39.3	11	129	130	440	36

90° ELBOW



G	PART NO	L	Z	E	Wt (g)	Box
3/8"	021.033.01	11.4	11.6	23.5	15	450
1/2"	021.033.02	15	12	26.5	22	300
3/4"	021.033.03	16.3	16.7	32.5	37	350
1"	021.033.04	19.1	19.9	41	60	200
1 1/4"	021.033.05	21.4	27.6	50	95	120
1 1/2"	021.033.06	21.4	37.6	60	180	140
2"	021.033.07	25.7	46.3	75	340	70
2 1/2"	021.033.08	30.2	53.8	89	436	40
3"	021.033.09	33.3	65.7	106	770	25
4"	021.033.10	39.3	79.7	129	1020	14

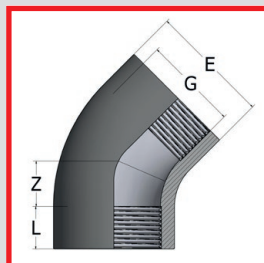
90° ELBOW – MALE THREAD ONE END – FEMALE THREAD ONE END



d1 x d2	PART NO	Z1	Z2	B	C	Wt (g)	Box
1/2" x 1/2"•	021.2683.02	20.5	20.5	16	16	24	100
3/4" x 3/4"•	021.2683.03	24.5	24.5	17	17	37	100
1" x 1"•	021.2683.04	30	30	21	21	67	100

PN10 RATED

45° ELBOW



G	PART NO	L	Z	E	Wt (g)	Box
3/8"	021.043.01	11.4	8.1	23.5	10	500
1/2"	021.043.02	15	6.5	28	18	700
3/4"	021.043.03	16.3	8.7	34	30	400
1"	021.043.04	19.1	10.9	42	50	250
1 1/4"	021.043.05	21.4	14.6	51	80	150
1 1/2"	021.043.06	21.4	21.6	61	145	170
2"	021.043.07	25.7	27.3	75	254	90
2 1/2"	021.043.08	30.2	31.8	89	360	50
3"	021.043.09	33.3	38.7	106	620	30
4"	021.043.10	39.3	46.7	129	830	16

• NON COMER PRODUCT

UK Wide Next Day Delivery*

epco customers can place orders up to 5pm for next day delivery to most addresses in the UK*

ABS

PVC IMPERIAL

PVC METRIC

POLYPROPYLENE

COMPRESSION FITTINGS

GUIDELINES

