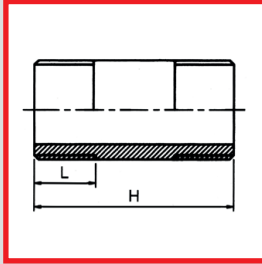


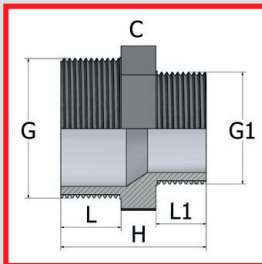
PVC IMPERIAL PRESSURE FITTINGS THREADED (BSP)

NIPPLE



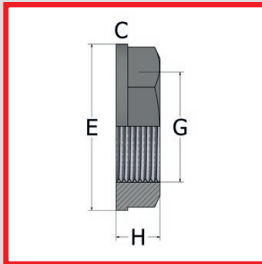
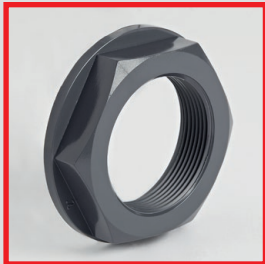
SIZE	PART NO	L	H	Wt (g)	Box
1/4"•	021.253.00	12	40	7	100
3/8"•	021.253.01	12	43	11	100
1/2"•	021.253.02	16	50	13	100
3/4"•	021.253.03	18	55	20	100
1"•	021.253.04	20	63	30	50
1 1/4"•	021.253.05	23	75	51	25
1 1/2"•	021.253.06	28	88	83	10
2"•	021.253.07	29	88	119	10
2 1/2"•	021.253.08	30	106	169	10
3"•	021.253.09	36	128	243	10
4"•	021.253.10	38	153	485	10

REDUCING NIPPLE



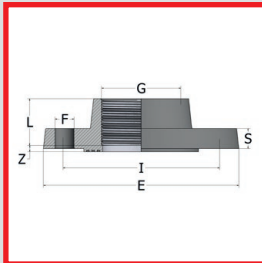
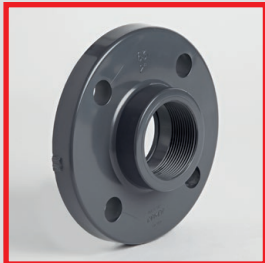
G x G1	PART NO	L	L1	H	C	Wt (g)	Box
1/2" x 3/8"	021.283.0201	15	11.4	38	24	10	550
3/4" x 1/2"	021.283.0302	16.3	15	43	30	17	350
1" x 3/4"	021.283.0403	19.1	16.3	47	36	25	450
1 1/4" x 1"	021.283.0504	21.4	19.1	56	46	42	270
1 1/2" x 1 1/4"	021.283.0605	21.4	21.4	58	50	48	180
2" x 1 1/2"	021.283.0706	25.7	21.4	62	65	80	110
2 1/2" x 2"	021.283.0807	30.2	25.7	73	80	138	80
3" x 2 1/2"	021.283.0908	33.3	30.2	82	95	208	35
4" x 3"	021.283.1009	39.3	33.3	90	120	340	24

BACKNUT



G	PART NO	E	H	C	Wt (g)	Box
3/8"•	021.323.01	34	12	24	8	1200
1/2"•	021.323.02	38	13	29	13	800
3/4"•	021.323.03	43	14	34	16	1250
1"•	021.323.04	56	16	46	30	600
1 1/4"•	021.323.05	65	18	50	35	450
1 1/2"•	021.323.06	72	19	60	45	300
2"•	021.323.07	94	21	80	90	150
2 1/2"•	021.323.08	115	24	94	97	120
3"•	021.323.09	130	27	108	137	80
4"•	021.323.10	162	30	135	207	90

FULL FACE FLANGE – NP10/16



G	PART NO	L	Z	I	E	S	Holes	Bolt Dia	Wt (g)	Box
1/2"	021.143.02Z	16	4.5	65	95	11	4	M12	78	100
3/4"	021.143.03Z	19	4.5	75	105	12	4	M12	105	60
1"	021.143.04Z	22	4.5	85	115	14	4	M12	143	50
1 1/4"	021.143.05Z	26	4.5	100	142	15	4	M16	220	50
1 1/2"	021.143.06Z	31	4.5	110	152	16	4	M16	280	48
2"	021.143.07Z	38	4.5	125	165	18	4	M16	380	36
2 1/2"	021.143.08Z	44	6	145	185	19	4	M16	505	15
3"	021.143.09Z	51	7	160	200	20	8	M16	685	30
4"	021.143.10Z	61	8	180	220	22	8	M16	940	24

• NON COMER PRODUCT

UK Wide Next Day Delivery*

epco customers can place orders up to 5pm for next day delivery to most addresses in the UK*

ABS

PVC IMPERIAL

PVC METRIC

POLYPROPYLENE

COMPRESSION FITTINGS

GUIDELINES

