

MOUNTING KIT FOR BUTTERFLY VALVE – COMPRISING STUB FLANGES – BACKING RINGS AND BOLT SETS



SIZE	PART NO
2 1/2"•	023.92E.075-KIT-V
3"•	021.92E.09-KIT-V
4"•	021.92E.10-KIT-V
5"•	023.92E.140-KIT-V
6"•	021.92E.12-KIT-V
8"•	021.92E.13-KIT-V

PLEASE CONFIRM EITHER PVC OR GALVANISED BACKING RINGS WHEN ORDERING

DUCTILE IRON BUTTERFLY VALVE – EPDM LINER



SIZE	PART NO	SIZE	PART NO
1 1/2"•	9911-06	10"•	9911-14
2"•	9911-07	12"•	9911-15
2 1/2"•	9911-08	14"•	9911-16
3"•	9911-09	16"•	9911-17
4"•	9911-10	18"•	9911-18
5"•	9911-11	20"•	9911-19
6"•	9911-12	24"•	9911-20
8"•	9911-13		

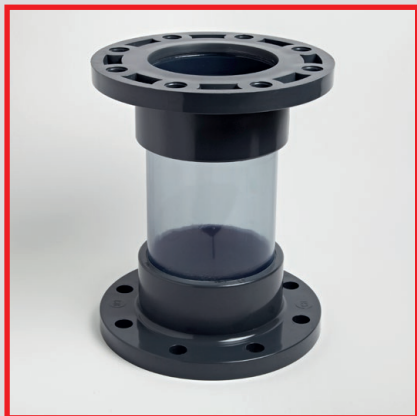
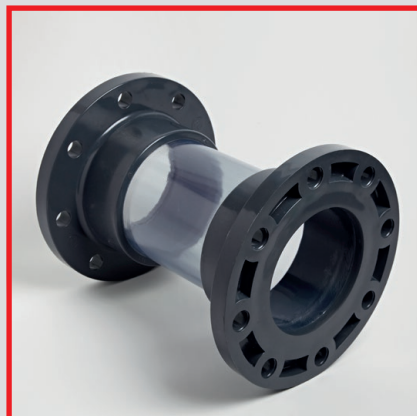
EPOXY COATED DUCTILE IRON BODY ST. ST. 316 DISC

STANDARD SPRING TYPE FOOT VALVE STRAINER – DOUBLE UNION – EPDM SEAL – PLAIN ENDS



SIZE	PART NO	L	H	E	Wt (g)
1/2"•	021.861.02Q	16	107	52	150
3/4"•	021.861.03Q	19	130	62	200
1"•	021.861.04Q	22	154	70	330
1 1/4"•	021.861.05Q	26	176	84	530
1 1/2"•	021.861.06Q	31	202	94	680
2"•	021.861.07Q	38	239	117	1230
2 1/2"•	022.861.075Q	44	306	148	2550
3"•	021.861.09Q	51	362	179	4550
4"•	021.861.10Q	61	367	179	4600

SPRING MATERIAL = STAINLESS STEEL



SIGHT GLASS

SIZE	PART NO
2 1/2"•	023.891.075
3"•	023.891.090
4"•	023.891.110
5"•	023.891.140
6"•	023.891.160

ALL FLANGED NP10/16



LABORATORY BALL VALVE – THREADED ENDS

SIZE	PART NO
1/4"•	021.983.00
3/8"•	021.983.01

• NON COMER PRODUCT

